

Experience Design Service

Glasgow Science Centre

50 Pacific Quay | G51 1EA | 0141 420 5000



GLASGOW
**SCIENCE
CENTRE!**

About Us →

Glasgow Science Centre is a 5-star visitor experience dedicated to raising awareness to all in Scotland of the importance of science to our well-being, our economy and our society in the 21st century. By furthering engagement with, and enthusiasm for, science through delivery of interactive experiences that inspire, challenge and engage, Glasgow Science Centre contributes to developing Scotland as a science nation.

What we do →

We are a team of experienced scientists, educationalists, designers, makers and project managers who are passionate about providing meaningful and compelling STEM engagement experiences.

We are expert in making complex subjects accessible and interesting; we can bring independent thinking, objectivity and creativity to your public engagement programmes.

We can connect you to large numbers of people, delivering national coverage; reaching children and adults of all ages and hard-to-reach and often excluded groups and communities. We offer a flexible range of services that we can tailor to your needs and experience; consultancy, training, events, exhibits, exhibitions, outreach, workshops, print, online and multimedia.

Public engagement consultancy

Public engagement strategy development
Supporting pathways to impact section of grant applications

Interactive exhibits and research demonstrator design & production

Interpretation, prototyping, design and fabrication

Programme and events development & delivery

Meet the Expert programmes
Schools/community programmes

Multimedia design & production

Visual design & branding
Video, animations and apps production

Project management

Throughout the project lifetime and post-opening
Delivery of Royal Society Summer Science exhibitions

How we do it →

Glasgow Science Centre has a highly experienced in-house team of science content developers, exhibition designers, graphic designers, IT developers, evaluators and project managers.



Explore

Curiosity drives us – science is our thing too. We want to find out about you, your research, what motivates you and it.

Distil

What's the story? We work with you to tease out the 'big ideas', the 'hooks' that will drive how we can connect to and activate your audience.

Design

We create solutions and options. We will co-create with you, bringing creativity and innovation combined with a wealth of practical, coal face experience.

Create

We like making and doing things. With our in-house skills and our network of specialist partners and suppliers we manage the processes of creation, delivery and evaluation.

Ignite

We will connect you to your audience; tap into our skill base, infrastructure and networks to ensure your engagement reaches its potential beyond the pale and creates a legacy of impact.

Powering the Future

Client | Glasgow Science Centre (internal)

Location | Floor 2

Value | £1,550,000

Scale | 70 interactives

Opened | December 2015



About

Powering the Future is a hands-on, highly interactive exhibition that provides a unique opportunity for the public and school pupils to immerse themselves in the science exposing the critical issues related to energy supplies and to understand the problems and challenges we face.

Consisting of over 70 exhibits of innovative, interpretive panels, the exhibition is helping to increase knowledge and understanding around the different energy supplies and is creating an open, supportive environment where visitors can identify the problems and challenges we face and encourage them to think creatively about potential solutions.

Powering the Future provides clear, unbiased information on the benefits and limits of different energy sources rather than the promotion of one over the other. The exhibition shines a light on the innovation and engineering excellence in the energy sector and highlights the exciting and rewarding careers that are available with a STEM background.





Powering the Future On Tour

Client | Glasgow Science Centre (internal)

Location | Venues across Scotland

Value | £250,000.00

Scale | 16 portable interactives

Value | November 2018



About

Following on from the success of the Powering the Future in-house exhibition, Glasgow Science Centre secured funding to develop a touring interactive exhibition that raises awareness of the science & engineering behind an energy future that is affordable, secure, and cleaner.

The Experience Design Service team designed and developed 16 mobile energy exhibits and associated educational resources, to be delivered in a national touring programme, engaging with over 90,000 school children (P4-S2), college students and community audiences.

Utilising experience gained from the design and delivery of the hugely successful BodyWorks On Tour exhibition, the team created a suit of exhibits and resources that provide an exciting, engaging and memorable experience whilst ensuring that the exhibits are robust, lightweight, quick to set up and easy to move in a variety of venues across Scotland.



Royal Hospital for children

Client | NHS Greater Glasgow and Clyde; Glasgow Children's Hospital Charity

Location | Royal Hospital for children, Glasgow

Value | £1,289,323

Funders | NHS Greater Glasgow and Clyde; Glasgow Children's Hospital Charity with funds provided via Yorkhill Children's Charity

Opened | 2015



About

Working with the NHS and Glasgow Children's Hospital Charity, Glasgow Science Centre's Experience Design Service was commissioned to design and develop patient waiting areas for a new 5-storey 256 bed hospital in the city. This new building was a replacement for the existing Royal Hospital for Sick Children.

The Royal Hospital for Children provides a large number of specialist services to the West of Scotland and the wider population of Scotland, in addition to the full range of secondary care services to people of Greater Glasgow and Clyde. Specialist services include: cardiology and cardiac surgery, renal and bone marrow transplantation.





Newton Flight Academy

Client | Glasgow Science Centre (internal)

Location | Floor 2

Value | £630,000

Opened | March 2022



About

The Newton Flight Academy is a permanent classroom used to teach students aviation-related STEM concepts; inspiring engineers and scientists of tomorrow to develop the ideas and technologies that will shape the future of more sustainable aircraft and aviation.

Developed in partnership with FIRST Scandinavia, made possible through an investment from Boeing, and supported by University of Strathclyde and Mathworks, the Academy hosts three full-motion flight simulators. It is the first Newton Flight Academy to open in the UK and will work in close partnership with the Science Skills Academy in the Highlands and Islands, which has been operating Newton Rooms since 2019.





Kirkcudbright Dark Skies Planetarium

Client | Kirkcudbright Development Trust

Location | Kirkcudbright, Dumfries & Galloway

Value | £63,000

Scale | 25 exhibits

Funders | Kirkcudbright Community Development Trust

Opened | April 2021



About

Design and development of an interactive visitor experience and the provision of support to Kirkcudbright Development Trust with the creation of the visitor experience.





Glasgow Science Centre - Kirkcudbright Dark Skies Planetarium

Space Zone

Client | Glasgow Science Centre (internal)

Location | Floor 1

Value | £97,000

Scale | Large lightbox exhibition and 3 interactive exhibits

Opened | 2015



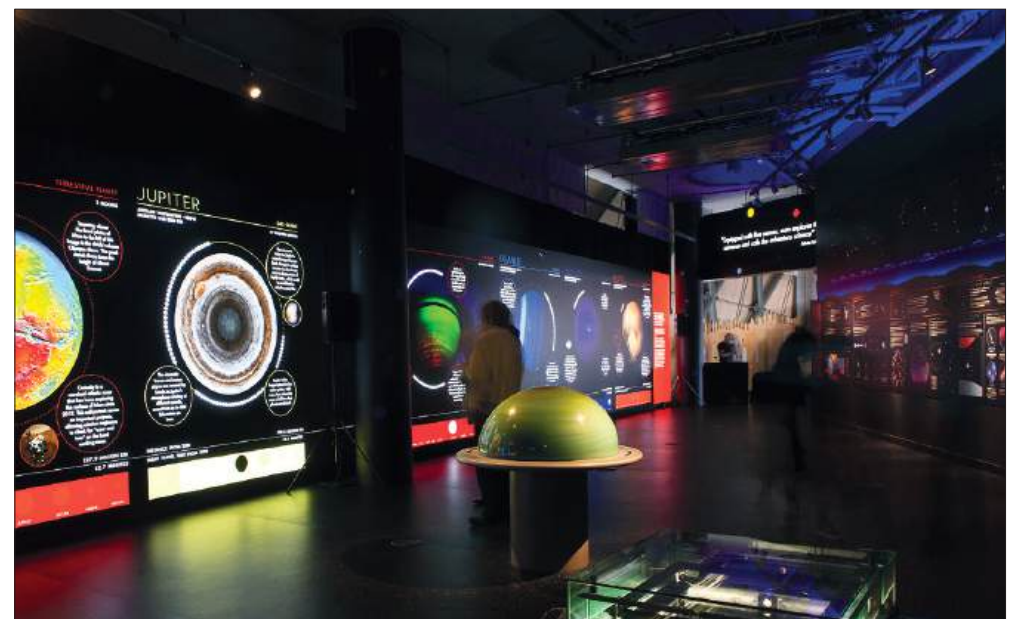
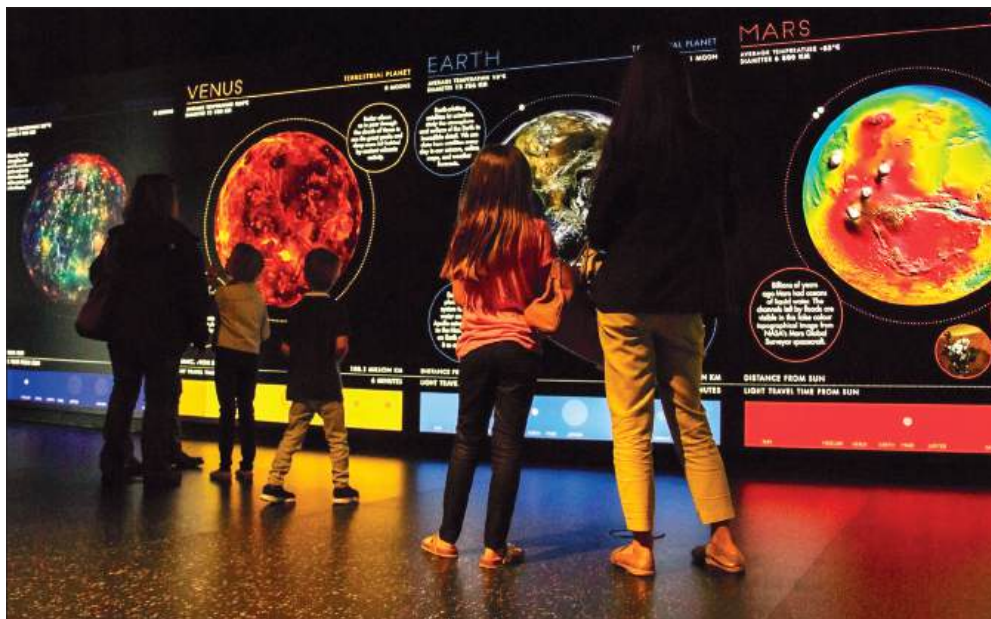
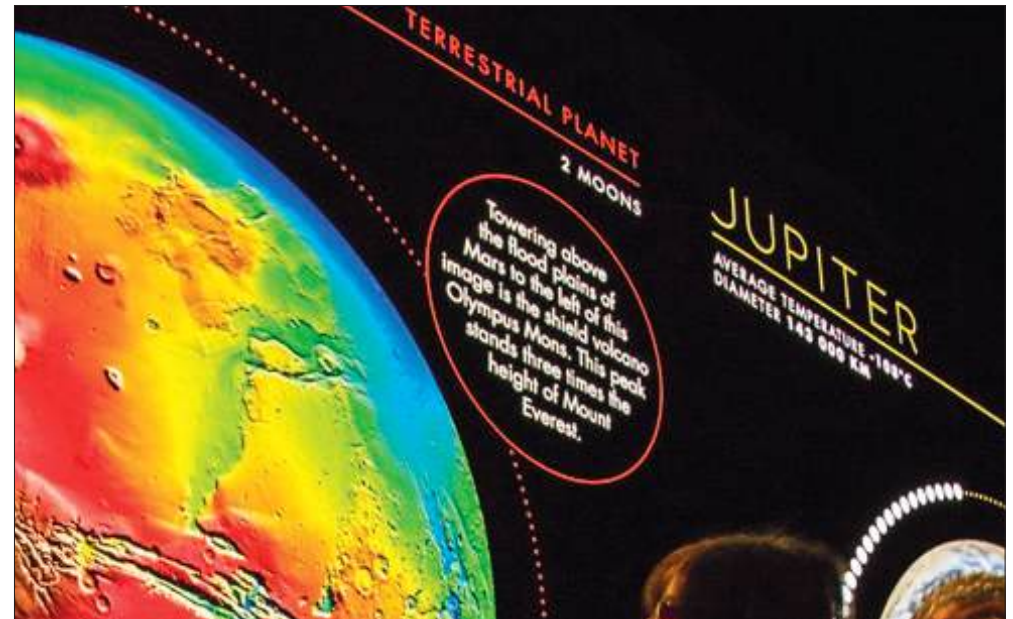
About

The Space Zone is an informative gallery bringing to life some of the most cutting edge astronomy research and space exploration. It helps reinforce the topics and themes explored in our live presentations and Planetarium shows.

The Zone is designed to resemble the night sky. Its darkened setting provides a perfect backdrop for the backlit wall displays featuring images of the planets in the solar system and the constellations. Bite sized informative text enables visitors to learn more about the subjects highlighted in the displays.

Three themed areas encourage visitors to explore different aspects of astronomy and space exploration:

- a 20-metre long light box exhibition “In a Different Light” covers the latest findings about every planet in our solar system;
- a stargazing wall features easy-to follow star maps and guides for every season; and
- a “manned spaceflight exhibition, includes a photo-op “Window in Space”, and interactive exhibits which allow visitors to understand some of the unique challenges presented by our exploration of the final frontier.



Explore!

Client | Glasgow Science Centre (internal)

Location | Floor 1

Value | £555,000

Scale | 55 interactives

Opened | September 2021



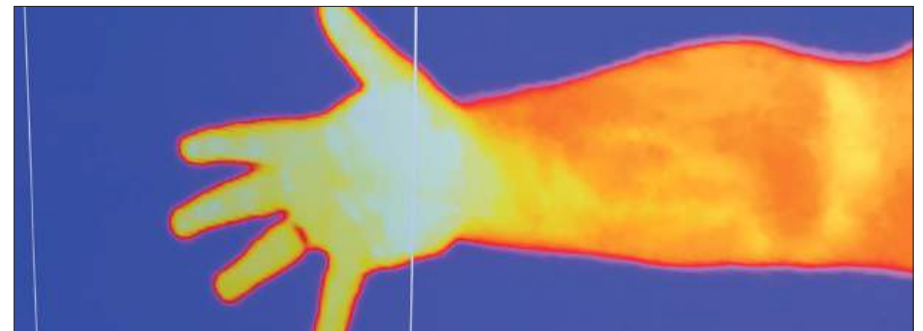
About

At Glasgow Science Centre, we believe that we are all scientists. We believe that science can enrich lives and empower us to make positive changes.

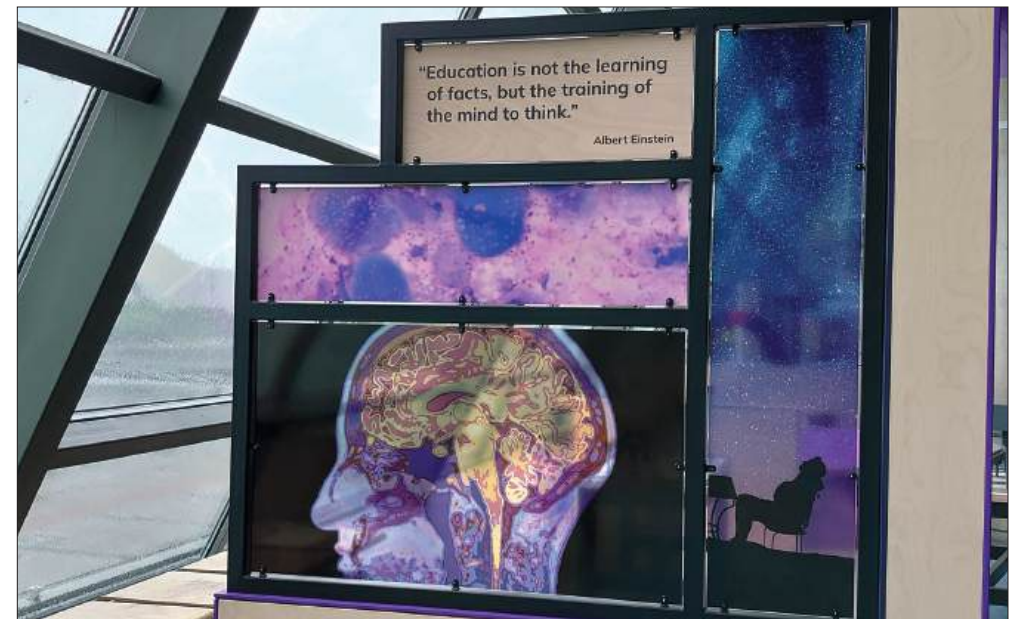
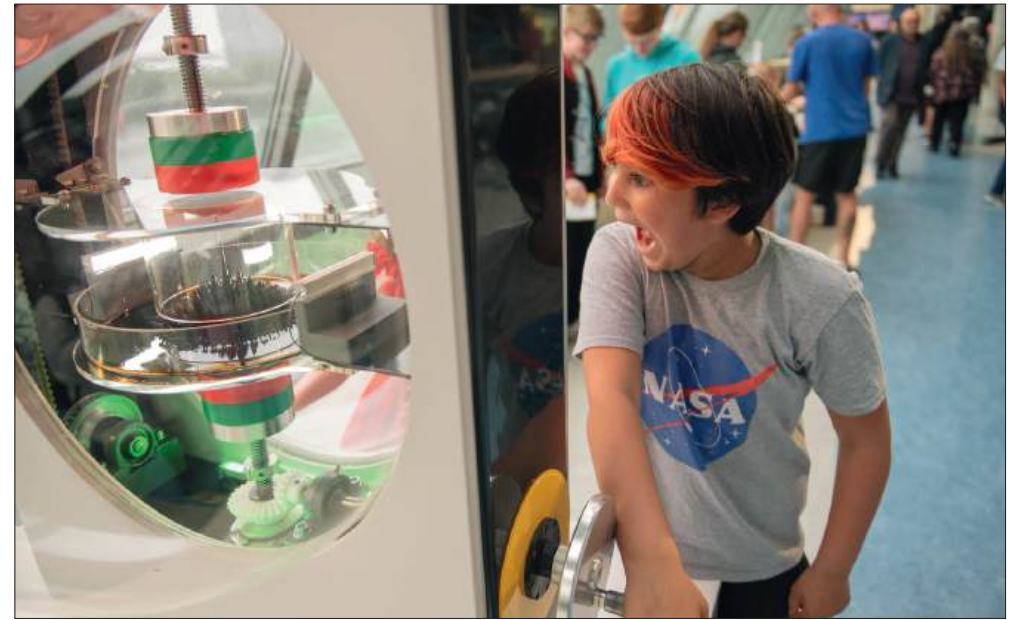
Explore! is an exciting evolution of our first-floor experience with a mixture of refurbished visitor favourites and brand new interactive exhibits. The exhibition has been carefully curated to nurture visitors' inner scientist through the exploration and investigation of scientific phenomena.

Exhibits are complemented by accessible interpretations, that allows visitors to 'dig deeper' into the science of each phenomenon together with surrounding visual information that highlights the key habits of scientists.

Our broad selection of phenomena from the natural sciences include sound, light, magnetism, electricity, forces, life, geological processes, mechanics, and mathematics. Visitors can make a splash with sound, avoid detection from a thermal camera, and strike a pose with colourful shadows.



get ready to
Explore!



BodyWorks

Client | Glasgow Science Centre (internal)

Location | Floor 3

Value | £1,900,000

Scale | 10 interactives

Funders | GSK, Wellcome Trust, GSC Endowment Fund, Garfield Weston Foundation

Opened | April 2013



About

BodyWorks is an exciting new approach to engaging the public and schoolchildren with the wonder of biomedical sciences. This practical, hands-on exhibition uses a combination of interactive exhibits and immersive live laboratory experiences to raise awareness of the science supporting human health and well-being in the 21st century.

There are three main zones to explore in the Bodyworks exhibition: About You, the Research Capsules, and the Interactive Zones. The exhibition includes a Live Lab where the public have a unique opportunity to engage with vibrant expert-led activities or volunteer to participate in genuine research experiments on-site.

Popular features of the exhibit include a virtual autopsy table, sprint track and human-sized hamster wheel.





West Dunbartonshire STEM Hub

Client | West Dunbartonshire Council

Location | St Patrick's Primary School, Dumbarton

Value | £200,000

Funders | West Dunbartonshire Council

Opened | November 2016



About

WDC STEM Hub is an interactive learning resource created on behalf of staff and pupils at St Patrick's Primary School in Dumbarton. Glasgow Science Centre was contracted to design, develop, fabricate and install an integrated learning environment in the school.

The Hub has been developed and produced by Glasgow Science Centre's Experience Design Service – our team of expert designers, project managers, IT professionals, educationalists and lateral thinkers.

The brief provided by WDC was clear that we should address a range of issues evidenced in existing science learning around the quality of pupil engagement and interaction.





A Question of Perception

Client | Glasgow Science Centre (internal)

Location | Floor 1

Scale | 70 interactives

Opened | March 2017



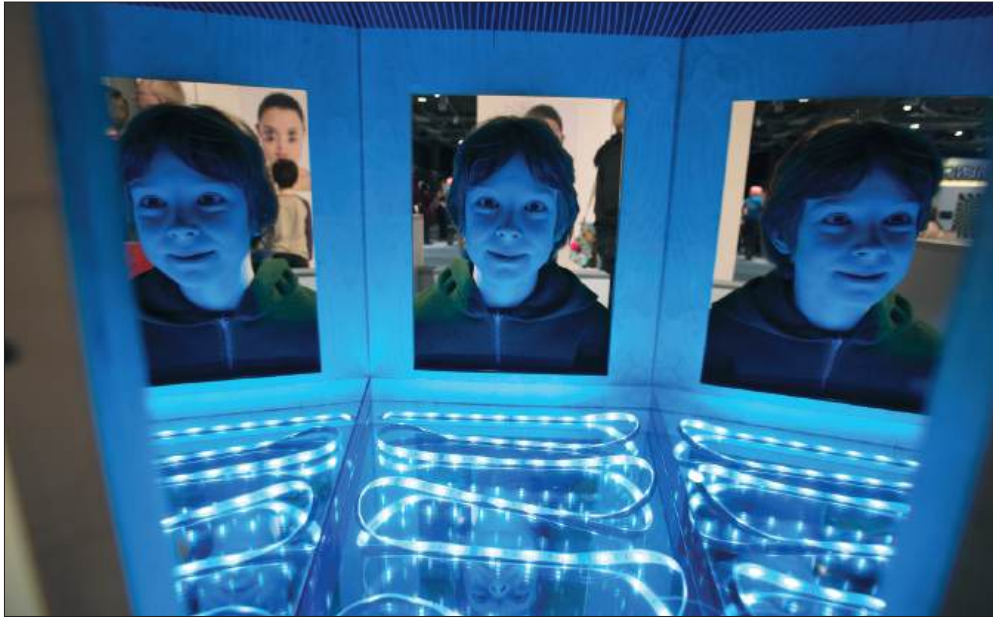
About

This popular exhibition invites visitors into a world where nothing is quite as it seems. Intriguing illusions and exciting experiences to delight all ages.

The whole universe will tilt in the Wacky Salon or customers can grow or shrink themselves in the Ames Room. Or even stare into infinity. Visitors will be left wondering if they can trust their eyes, brain, or senses.

'A Question of Perception' combines a variety of immersive experiences that give insight into human perception.





Technology Enabled Care Campus

Client | South Lanarkshire Council

Location | Blantyre, South Lanarkshire

Value | £107,000

Scale | 10 interactives

Opened | April 2023



About

The TEC Zone exhibition is a unique approach to engaging a local community with 'Technology Enabled Care', or TEC for short. The exhibition sits within the Blantyre Care Hub, which includes transitional care apartments, community space, and nearby technology enhanced homes.

TEC has been around for decades, supporting people in their own homes and helping them to lead independent, healthier lives. Recent advances in technology have allowed for many more opportunities to make a real difference in people's lives.

As visitors wander around the exhibition, they can take part in 10 fun, interactive experiences. These experiences will demonstrate how technology works in everyday situations and where technology can make an impact.





Geoenergy

Client | British Geological Survey

Location | Touring

Value | £129,550

Scale | 6 interactives

Funders | Natural Environment Research Council

Opened | December 2021



About

'Clean Energy Beneath our Feet' is a touring exhibition developed by Glasgow Science Centre for the British Geological Survey. The modular and flexible installation consists of six interactive exhibits and seven graphic displays.

The exhibition is designed to engage the public with the world-class science harnessed by the UK Geoenergy Observatories. These research facilities, in Glasgow and Cheshire, are pioneering the development of new clean energy. Including geothermal energy, hydrogen storage, carbon capture and storage solutions for wind, solar, and tidal energy.

Highlights of the exhibition include an animated hologram that reveals how warm water in abandoned mines could be used to provide low-carbon heating for Glasgow and other cities.





Barclays Sustainability Exhibition

Client | Barclays

Location | Barclays Campus, Glasgow

Value | £166,000

Scale | 2 interactives / lightbox display & graphics

Opened | April 2022



About

When Barclays were building a new campus in Glasgow, they worked with Glasgow Science Centre to help build on their commitment to sustainability. The sustainability exhibition is open to all, including Barclays staff, business visitors, and the general public.

The exhibition sits within one of the riverside buildings and highlights the sustainability measures employed in the construction of the Glasgow campus. This pair of interactive exhibits and dynamic wall graphics tell the story of the Dragonfly project and how the campus utilises technology to reduce its carbon footprint.

A highlight of the exhibition is a table-top model of the campus with slidable screens that give an augmented reality experience to showcase key features.



Scottish Seabird Centre

Client | Scottish Seabird Centre

Location | Scottish Seabird Centre, North Berwick

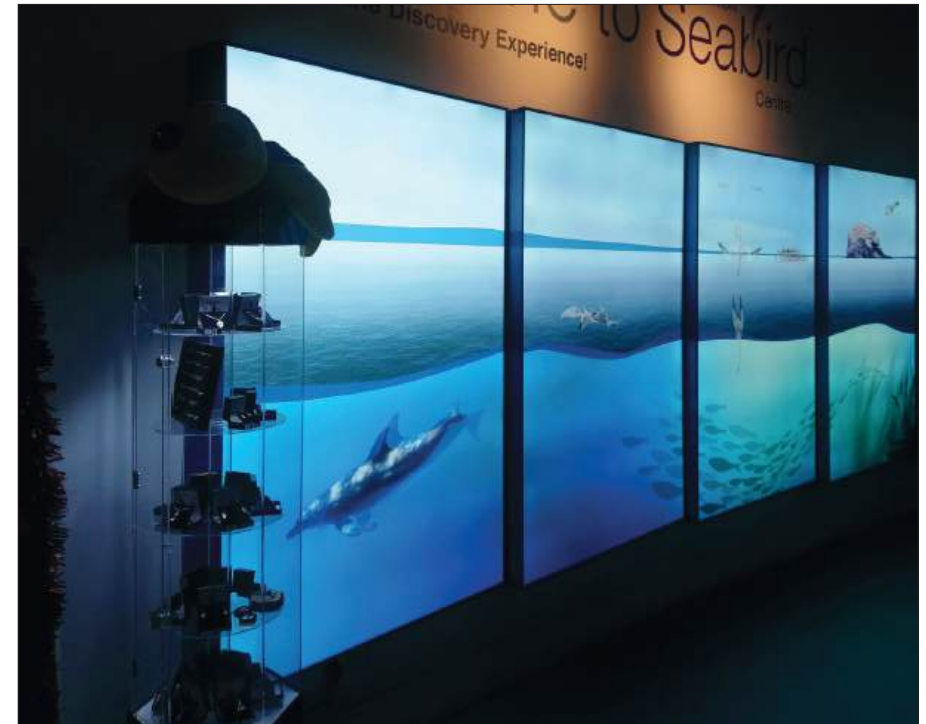
Opened | December 2019



About

Scottish Seabird Centre, in partnership with Glasgow Science Centre, developed new content for exhibition space and updated and improved all areas of the Centre.

The new capital works supported the extended delivery of our education, outreach and events programme as well as provided improved spaces for the community to enjoy. Focusing on science engagement and on exciting visitors about the wonders of Scotland's seas – seabirds and beyond.





Glasgow Science Centre - Scottish Seabird Centre

Outdoor Space

Client | Glasgow Science Centre (internal)

Opened | July 2021



About

As part of Glasgow Science Centre's Connect Project to make our building more permeable to visitors, we undertook a transformative placemaking exercise and redesigned our outer spaces to prioritise people over transport, provide outdoor exhibits, formalise active travel routes, increase biodiversity and create a destination for our communities.

The Fibonacci garden has become a safe recreational and social gathering space. The newly planted trees, grasses and wetlands have become a haven for recolonising wildlife while the interactive exhibits build anticipation of the experiences within.





Glasgow Science Centre - Outdoor Space

BAE Systems Academy

Client | BAE Systems

Location | Applied Shipbuilding Academy,
BAE Systems, Scotstoun, Glasgow

Value | £241,866

Funder | BAE Systems

Opened | October 2024

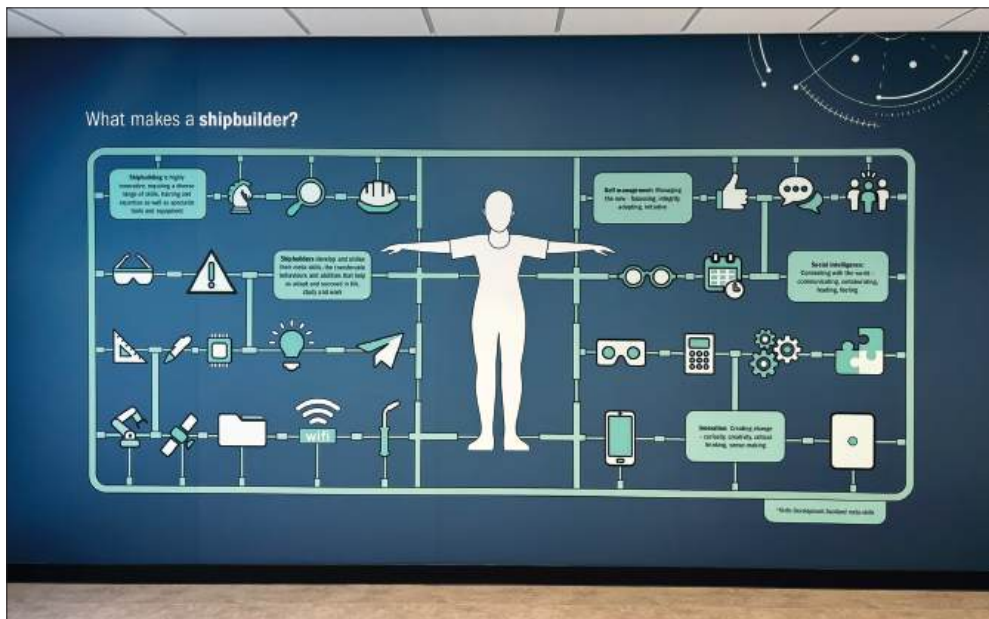


About

Commissioned by BAE Systems, the Experience Design Service team at Glasgow Science Centre developed and designed an Exhibition and Heritage space, along with the STEM Innovation Lab, within the new purpose built Applied Shipbuilding Academy at their Scotstoun site, exploring the innovations of naval shipbuilding, drawing from the past, present and future.

The project included all content development, graphics, software, exhibit and setwork design, as well as project management of all subcontractors required for installation.





Energy Transition Zone

Client | Energy Transition Zone Limited

Location | Outreach Vehicle, North East Scotland

Value | £202,915

Funder | Scottish Government: Just Transition Fund

Opened | January 2025



About

Commissioned by Energy Transition Zone Ltd, the Experience Design Service team at Glasgow Science Centre worked in partnership with Unusual Projects, following a successful competitive tender process, to develop and design a touring exhibition onboard a hybrid vehicle.

The 'Net Zero Challenge' vehicle is a learning experience for schoolchildren in the North East of Scotland that aims to raise awareness of low-carbon energy industries, help demystify the energy transition and promote pathways into energy careers.





Glasgow Science Centre - Energy Transition Zone

Thanks.

Get in touch:

Gillian Lang | Director of Experience Development
gillian.lang@glasgowsciencecentre.org

Experience
Design
Service

GLASGOW
SCIENCE
CENTRE!
Registered Scottish Charity: SC030809